

Research Article

Identification and Characterization of Families That Are Positively Deviant for Childhood Obesity in a Latino Population: A Case-Control Study

Byron A. Foster ^{1,2}, Christian A. Aquino ³, Sharol Mejia,³ Barbara J. Turner,^{2,3} and Arvind Singhal^{4,5}

¹Departments of Dermatology and Pediatrics, Oregon Health & Science University, Portland, OR, USA

²Center for Research to Advance Community Health, University of Texas Health San Antonio, Antonio, TX, USA

³School of Medicine, University of Texas Health San Antonio, Antonio, TX, USA

⁴Department of Communication, The University of Texas at El Paso, El Paso, TX, USA

⁵Inland University of Applied Sciences, Elverum, Norway

Correspondence should be addressed to Byron A. Foster; fosterb@ohsu.edu

Received 13 December 2017; Revised 16 April 2018; Accepted 6 May 2018

Academic Editor: R. Prager

Copyright © 2018 Byron A. Foster et al. This is an open access article distributed under the Creative Commons Attribution License, which permits unrestricted use, distribution, and reproduction in any medium, provided the original work is properly cited.

1

Background. Childhood obesity is a complex public health challenge that requires innovative, sustainable solutions. Positive deviance, inspired by the science of complexity, is an approach that examines what allows certain individuals to succeed despite being predicted to fail. This study is aimed at identifying and defining positive deviants for early childhood obesity. **Methods.** This case-control study used medical record data to identify Latino children aged 2–5 and classify them using their longitudinal weight change. Parents of children with trajectories toward a healthy weight from an obese weight (cases) and parents of children with stable obese weight trajectories over time (controls) were recruited. Mixed-methods analyses were used including a semi-structured interview and quantitative surveys evaluating diet, physical activity, sleep, feeding practices, and self-efficacy. Qualitative description was applied to the qualitative data; quantitative data were analyzed using descriptive statistics and logistic regression modeling. **Results.** Of eligible Latino children identified from the overall data set ($n = 1,621$), 257 (16%) had trajectories toward a healthy weight, and among these, 21 positively deviant cases completed the study with 23 matched controls. Positive deviant families were characterized by lower education, higher self-efficacy, and a more Mexican cultural orientation. Findings suggest that effective engagement of other caregivers and creating healthy food environments were important determinants of healthy weight outcomes. **Conclusions.** Positive deviants (cases) were distinct from controls in several parenting strategies such as creating healthy food environments and engaging caregivers. They had higher self-efficacy despite lower education. There were fewer differences in diet and physical activity than expected.

2

1. Introduction

As early childhood obesity strongly predicts adolescent and adult weight [1], effective interventions directed at this age group are needed to reduce lifetime risk of diabetes and cardiovascular disease. Low-income Latino children are at highest risk for obesity among racial-ethnic groups [2] and experience significant healthcare access disparities [3]. Prior interventions have demonstrated mixed results in Latino, preschool-aged children.

Well-designed, theory-based interventions showed no effect on adiposity in Head Start [4, 5] or community settings [6]. However, other studies using either a home-based intervention targeting healthier routines [7] or a parenting skills intervention on nutrition have shown more promising results [8]. These mixed results highlight the need for further community-based research.

Approaches that identify what is already working in low-income Latino families can inform the development of interventions for the larger community.

Positive deviance is an approach to solve complex problems such as childhood obesity that asks, theoretically, what is working in the community, particularly among the most disadvantaged ones [9, 10]. By identifying individuals who have found a way to achieve a desirable outcome in spite of adversity, and discovering their uncommon and replicable practices, the positive deviance approach presents an innovative, inside-out approach to solve complex problems [11–13]. In other words, there may be families at high risk for continued obesity who have successfully achieved a healthy weight and have used existing assets and resources to do so. Identifying their behaviors may yield lessons applicable for the rest of the community.

Applications of positive deviance theory to childhood malnutrition are well established [14, 15]; however, applications to address childhood obesity are very limited. Of the few studies published, their limitations include examination of cross-sectional data on weight [16] or the lack of control groups [17]. The current study addresses these limitations by identifying subjects through a longitudinal analysis of children's weight, and employing a case-control design, coupled with mixed-methods analysis to define positive deviants' characteristics and behaviors. We examined both known associations with obesity (feeding behaviors, physical activity, sleep, and screen time) along with a semistructured interview to elicit potentially novel behaviors.

2. Methods

2.1. Overall Design. This study identified children as positive deviants (cases) who had been obese and then were able to reduce their adiposity to a healthier weight. Children who remained persistently obese served as controls. Parents of the children classified as cases and controls were recruited to participate in this mixed-methods study that included a semistructured interview and a questionnaire on their lifestyles, eating habits, and physical activity.

2.2. Study Participants and Growth Trajectory Analysis. Medical record data from a large, safety-net healthcare provider in San Antonio, TX, were used to identify the weight trajectories. We focused on the most recent data from 2013 to 2015 (49,860 children) to examine weight-based trajectories and to minimize recall bias in our parental interviews. A data analyst with the health system pulled the growth chart data from the medical records using an HIPAA waiver obtained for this study.

Children were included in the growth trajectory analysis if they were obese (≥ 95 th percentile for body mass index (BMI) per CDC guidelines) during 2–5 years, had at least three height and weight measurements over more than one year to determine a BMI z -score trajectory, were of Latino ethnicity, and lived in a San Antonio zip code.

A latent class linear mixed model with a linear link function and a diagonal variance-covariance structure was used to classify each child into a distinct group based on their BMI z -score trajectory [18]. Due to high variability in the BMI z -scores over time, a median filter (Tukey's Running

Median Smoothing [19]) was used to reduce noise in the data. The variables used to model the repeated BMI z -scores were sex and age. Sex was treated as a fixed effect, while age varied by subjects (random effect) who entered the study at different times. The mean posterior probabilities of class membership were used to assess the classification accuracy, which in turn determined the number of classes allowed in the model.

2.3. Recruitment. After classification of children by weight trajectory, their parents were recruited to participate as either cases (positive deviants) or controls (Figure 1). Potential positive deviants had a negative BMI z -score trajectory over time (from an obese toward a healthy weight), were of Latino ethnicity, and with public insurance (based on their medical record). Controls had either a flat or an increasing BMI z -score trajectory by the latent class modeling and were matched by ethnicity and insurance status. Growth trajectory classes were visually confirmed on growth charts prior to recruitment. The sample size was determined by the qualitative data until thematic saturation was reached.

A letter, in English and Spanish, outlined the purpose and design of the study and was sent to all of the potential positive deviants. An option allowing recipients to return a postcard opting out of further communication was provided. An HIPAA waiver was obtained as part of the research protocol to do this. We recruited controls from the larger population of controls. A research assistant conducted follow-up phone calls with potential participants to determine if they met the eligibility criteria. Children were excluded from participation as either a case or a control if they had a diagnosis of intellectual disability or developmental delay, a seizure disorder, diabetes, cerebral palsy, a genetic problem, or if they were taking medication for attention deficit/hyperactivity disorder (these medications affect growth trajectories and physical activity).

2.4. Study Visit and Measures. Parents participated in a semistructured interview in either English or Spanish, followed by a quantitative assessment at either a clinical research center, a local library, or their home. All of the quantitative measures described below have been validated in Spanish except for the Comprehensive Feeding Practices Questionnaire [20]. Quantitative data were collected on REDCap [21].

2.5. Semistructured Interview. The semistructured interview was designed to elicit parents' opinions about the health of their child, including any changes purposely adopted or attempted related to their child and their child's health. Questions were grouped into general health and perceptions of health, feeding practices, physical activities, changes in weight, food purchasing and preparation, parent modeling, family rules and interactions, neighborhood and community resources, and school.

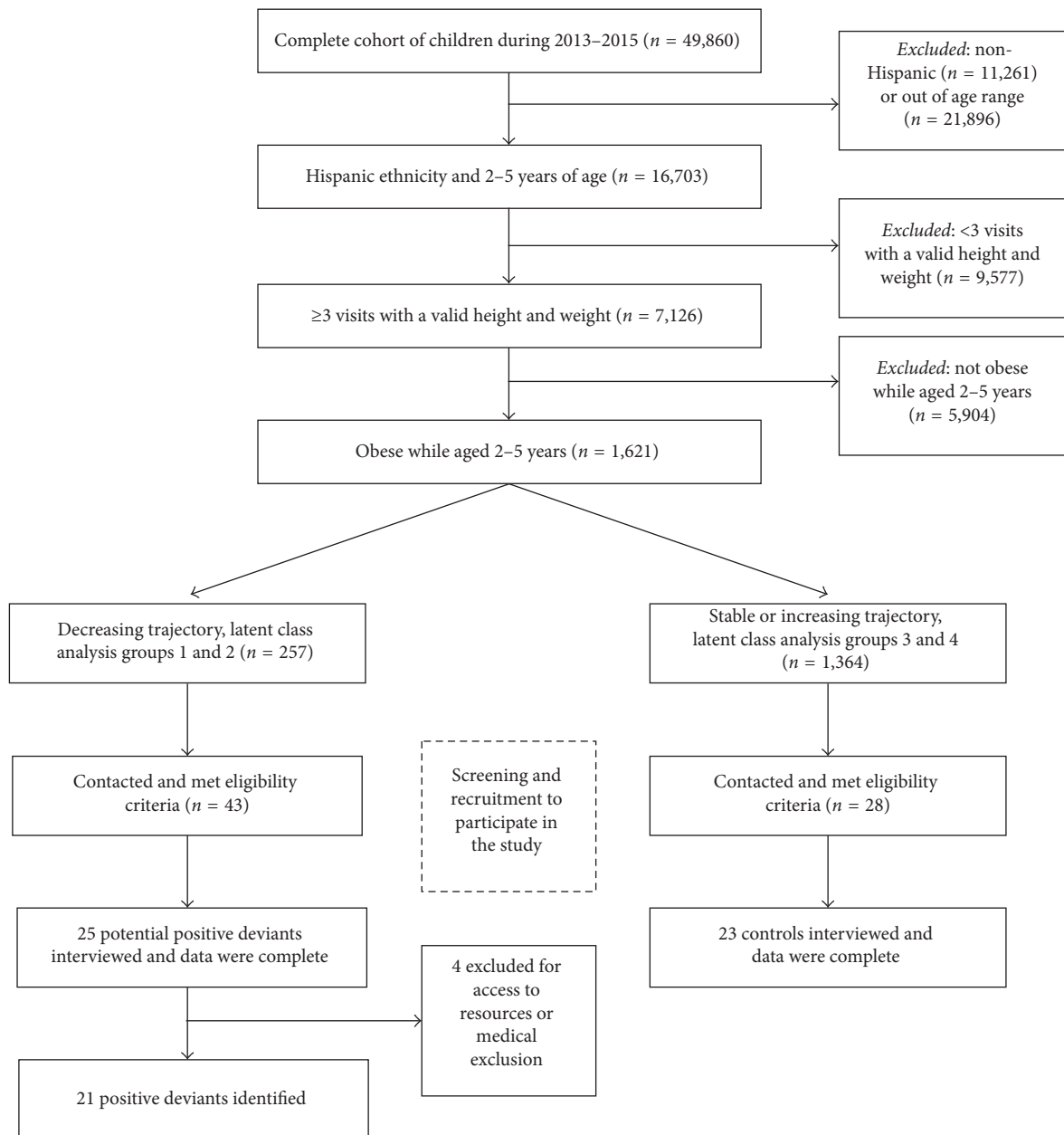


FIGURE 1: Identification of cases (positive deviants) and controls from a large, healthcare data set using inclusion and exclusion criteria as well as latent class trajectories.

2.6. Demographics. The structure of the Behavioral Risk Factor Surveillance System Questionnaire [22] was used to gather demographic characteristics including parental sex, height, weight, race/ethnicity, household size, income, employment, and education.

2.7. Food Frequency Questionnaire. The Block Kids Food Screener (BKFS), developed by NutritionQuest (Berkeley, CA, USA) [23], was administered to parents to assess their child's dietary intake of nutrients and food groups.

2.8. Feeding Practices. The Comprehensive Feeding Practices Questionnaire (CFPQ) [20] consisting of 49 questions

and 12 Likert subscales was administered. Parents self-reported the frequency and degree of agreement/disagreement with described practices and behaviors.

2.9. Screen Time, Sleep, and Outside Play. Participating parents were queried on their child's screen time using questions from the National Survey of Early Childhood Health [24]. Previously validated questions about their sleep habits [25] and outside play [26] were asked.

2.10. Food Security. To explore the relationship between food insecurity and obesity among low-income families, we asked questions to parents to assess their level of food

insecurity using the US Department of Agriculture's (USDA) questions [27].

2.11. Self-Efficacy. To explore potential relationships between self-efficacy and effective weight maintenance, parents also completed the General Self-Efficacy Scale [28].

2.12. Acculturation. To gauge the differential diversity of acculturation among Latino children in San Antonio, the **Acculturation Rating Scale for Hispanics (ARSMA-II)** was administered [29]. This included two subscales on the degree of Anglo and/or Mexican Orientation and three subscales that examined the degree of marginalization.

2.13. Data Analysis

2.13.1. Qualitative. Each semistructured interview was recorded and professionally transcribed in either English or Spanish, and all Spanish interviews were translated to English (Verbal Ink, Los Angeles, USA).

Dedoose software was employed to facilitate the collaborative coding process. Each semistructured interview was coded independently by two authors using qualitative description, and differences were resolved through discussion. Qualitative description was used as the analytic method to stay "close" to data and be pragmatic. The purpose of qualitative coding was to capture events and experiences through rich descriptions and not to generate theory from data or serve a deep interpretive function [30, 31].

2.13.2. Quantitative. Descriptive statistics were used to compare the groups by demographic characteristics and their responses to the administered surveys using SPSS 23.0 (IBM, USA). Logistic regression was performed to assess the strongest predictors of positive deviance status (dependent variable) with factors significant on bivariate analysis at $p \leq 0.10$ included in the forward, stepwise regression analyses, using a probability of Wald statistics for variable elimination.

2.14. Ethics and Incentives. This study was approved by the Institutional Review Board of the University of Texas Health Science Center at San Antonio. The Bexar County Translational Advisory Board provided input at all stages of the study. All parents provided written informed consent to participate and received a \$50 stipend for their participation.

3. Results

3.1. Identification of Positive Deviants. Of the 49,860 children in the data set from 2013 to 2015, there were 16,703 who were both Latino and 2–5 years of age (Figure 1). Of these, 57% (9,577) were excluded for reason of not having 3 or more visits spread over at least 12 months in order to assess a weight trajectory. Finally, 23% (1,621) of that sample was found to be obese (≥ 95 th BMI percentile for age and sex)

during the period and thus eligible for inclusion. From the latent class analysis, 16% (257) of children had a decreasing trajectory over time for their BMI z -score (groups 1 or 2) and 84% (1,364) had a stable or increasing trajectory (groups 3 or 4). Of the 257 children with a decreasing trajectory, we were able to contact and screen 43 children who were potentially positive deviants with 25 completing the study visit. Of the 1,364 controls, we screened them for eligibility on a rolling basis as we contacted them, with 23 controls completing the study, matched on ethnicity and insurance. The difference in the recruitment rate can be explained pragmatically: if a control needs to reschedule a visit, we moved onto the next control on the list. However, for positive deviants, given the limited number, we kept attempting to reschedule though that proved futile.

Since the screening did not fully evaluate the degree of access to resources (a core component to determine positive deviance), we reviewed the educational level and income data of the enrolled (potentially positively deviant) participants. Of the positive deviants interviewed, three had access to extra resources (either having a high income or being a medical provider) and one was identified as starting a medication for attention deficit disorder (something not identified at the time of screening). These participants were excluded from the final analysis.

3.2. Demographic Characteristics of Participants. The mean age of children enrolled was 71 months ($SD = 15$), 22/44 (50%) families reported an income of less than 25,000 USD per year, and 37/44 (84%) were on public insurance (Table 1). About half (24/44) of family members chose to complete the interview and surveys in English and the rest in Spanish. Six subjects reported having private insurance during the interview whose medical record had identified them as having public insurance. The positive deviants had a lower level of education than the controls, with most (69%) having less than a high school education compared with 39% of controls ($p = 0.02$). As expected, the BMI z -score was lower at the time of enrollment in the positive deviance group compared with the controls ($p < 0.001$) (Table 1).

3.3. Feeding Practices. Using the Comprehensive Feeding Practices Questionnaire, positive deviants reported a higher level of agreement with practices related to restricting their child's diet to limit less healthy foods and sweets on a Likert scale from 1 to 5, with a mean score of 4.1 ($SD = 1.0$) versus a mean of 3.5 ($SD = 1.0$) for controls ($p = 0.06$, t -test). There were no differences in the subscales of modeling, food as reward, encouraging balance and variety, the food environment, and restriction for weight control (Table 2).

3.4. Dietary Intake. After screening the food frequency data for quality, 43 children had valid food frequency data. Overall, the two groups were similar in their dietary intake overall with no major differences in nutrient or food group estimates at $p < 0.05$ (Table 2). The only observed difference

TABLE 1: Baseline demographic characteristics of study children and parents.

	Controls (<i>n</i> = 23)	Positive deviants (<i>n</i> = 21)	All (<i>n</i> = 44)	<i>p</i> value
Child age (months), mean (SD) ¹	71 (18)	69 (12)	71 (15)	0.75
Child sex (female), <i>n</i> (%) ²	10 (44%)	10 (48%)	20 (46%)	0.51
Child BMI percentile, median (IQR) ³	98.8 (96.9–99.3)	93.2 (82.8–96.5)	96.8 (91.6–99.2)	<0.01
Child BMI <i>z</i> -score, mean (SD) ¹	2.17 (0.60)	1.50 (0.72)	1.82 (0.74)	<0.01
Parental age (years), mean (SD) ¹	34 (7)	37 (11)	35 (9)	0.37
Interviewed parent sex (female), <i>n</i> (%) ²	23 (100%)	20 (95%)	43 (98%)	0.48
Parent BMI, mean (SD) ¹	33 (7)	30 (7)	32 (7)	0.21
Preferred language (English), <i>n</i> (%) ²	13 (57%)	11 (52%)	24 (55%)	1.0
Hispanic, <i>n</i> (%) ²	23 (100%)	21 (100%)	44 (100%)	1.0
Household size, median (IQR) ³	5 (4–6)	4 (3–5)	4 (3–5)	0.13
<i>Income, n (%)</i> ²				0.47
Less than \$25,000	11 (48%)	11 (52%)	22 (50%)	
Less than \$50,000	6 (26%)	7 (33%)	13 (30%)	
\$50,000 or more	5 (22%)	1 (5%)	6 (14%)	
Not known/not sure	1 (4%)	2 (10%)	3 (7%)	
<i>Marital status, n (%)</i> ²				0.18
Married	14 (61%)	8 (38%)	22 (50%)	
Divorced/separated	1 (4%)	4 (19%)	5 (11%)	
Never married/member of an unmarried couple	8 (35%)	9 (43%)	17 (39%)	
<i>Education level, n (%)</i> ²				0.02
Less than high school	9 (39%)	14 (67%)	23 (52%)	
High school diploma or equivalent	3 (13%)	5 (24%)	8 (18%)	
Any college or college graduate	11 (48%)	2 (10%)	13 (30%)	
<i>Insurance, n (%)</i> ²				0.67
Private	4 (17%)	2 (10%)	6 (14%)	
Public	19 (83%)	18 (86%)	37 (84%)	
None	0	1 (5%)	1 (2%)	

¹*t*-test; ²chi-squared test; ³Mann–Whitney test.

at the $p < 0.10$ level between positive deviants and controls was lower mean amounts of total protein ($p = 0.09$).

3.5. Physical Activity, Sleep, and Screen Time. Positive deviants reported higher outside physical activity time per week ($p = 0.09$). There were no significant differences in reported screen time (data not shown) or sleep patterns between the groups (Table 2).

3.6. Self-Efficacy, Acculturation, and Food Security. Overall, a trend of higher overall self-efficacy was observed in the positive deviant group compared with controls ($p = 0.10$) (Table 2). There were no differences in the three subscales of self-efficacy (initiative, effort, or persistence).

There was a different distribution of acculturation levels between the positive deviants and controls ($p = 0.01$) (Table 2), with positive deviants having more of a Mexican orientation. There were no major differences seen in the marginalization subscales (data not shown).

Only 59% of the families had high food security (Table 2). There were no differences by group on food security status as assessed by the USDA measure.

3.7. Multivariable Analysis. We examined the data for potential interactions between the factors associated at $p < 0.10$ with being a positive deviant. Across all parents, self-efficacy was positively associated with education and Pearson's

correlation coefficient ($r = 0.39$ ($p < 0.01$)). However, when examining positive deviants and controls separately, this association was only found to be true for controls with $r = 0.60$ ($p < 0.01$). For positive deviants, there was no significant correlation between general self-efficacy assessed with the GSES and education ($r = 0.17$; $p = 0.46$).

Given that education was associated with being a positive deviant and in an unexpected direction, we examined the low-education group (less than high school education). Only looking at those with less than a high school education, there was a difference in self-efficacy between positive deviants (mean GSES initiative scale = 4.2 (SD = 0.7)) and controls (mean GSES initiative scale = 3.3 (SD = 1.3); $p = 0.04$).

Stepwise logistic regression model building for prediction of positive deviance status yielded a final model with variables for self-efficacy and education level with an overall classification accuracy of 74% and a Nagelkerke's R^2 of 0.37. The continuous variable self-efficacy had an estimated OR of 5.0 (95% CI: 1.2–21.2; $p = 0.03$). The education level less than high school compared with college or more had an estimated OR of 20.1 (95% CI: 2.7–149.6; $p = 0.003$) and high school compared with college or more had an estimated OR of 17.0 (95% CI: 1.8–163.7; $p = 0.01$).

3.8. Qualitative Analysis. There were five different thematic foci that emerged from the qualitative data analysis that distinguished positive deviants (Table 3). First, positive deviants created a healthy food environment. They did not

TABLE 2: Parent-reported general self-efficacy, acculturation, food security, child physical activity, child sleep habits, and child dietary patterns between positive deviants and controls.

	Controls (<i>n</i> = 23)	Positive deviants (<i>n</i> = 21)	All (<i>n</i> = 44)	<i>p</i> value
<i>General self-efficacy, mean (SD)</i>				
Overall score	4.24 (0.67)	4.41 (0.48)	4.32 (0.59)	0.10
Initiative score	3.95 (1.04)	4.43 (0.69)	4.18 (0.91)	0.17
Effort score	4.41 (1.07)	4.37 (0.65)	4.39 (0.89)	0.12
Persistence score	4.38 (0.71)	4.43 (0.75)	4.40 (0.72)	0.92
<i>Acculturation levels, n (%)</i>				
Very Mexican oriented	8 (35%)	5 (25%)	13 (30%)	0.01
Mexican oriented to approximately balanced bicultural	5 (22%)	9 (45%)	14 (33%)	
Slightly Anglo oriented bicultural	10 (44%)	2 (10%)	12 (28%)	
Strongly Anglo oriented	0	4 (20%)	4 (9%)	
<i>Food security, n (%)</i>				
High food security	11 (48%)	15 (71%)	26 (59%)	0.43
Marginal food security	6 (26%)	2 (10%)	8 (18%)	
Low food security	5 (22%)	3 (14%)	8 (18%)	
<i>Physical activity</i>				
Days playing outside, mean (SD)	5.2 (1.9)	6.1 (1.7)	5.6 (1.8)	0.11
Time playing outside per day (minutes), mean (SD)	81 (45)	106 (74)	93 (61)	0.18
Active play time (hours per week), mean (SD)	7.2 (5.4)	11.1 (9.3)	9.1 (7.7)	0.09
<i>Sleep</i>				
Sleep (hours per day), mean (SD)	9.9 (1.7)	10.0 (1.0)	10.0 (1.4)	0.90
Child naps (yes), <i>n</i> (%)	7 (30%)	8 (38%)	15 (34%)	0.75
<i>Dietary patterns (estimates shown as mean (SD) intake per day)</i>				
Fruit, including fruit juice (cups)	1.4 (0.7)	1.5 (0.9)	1.4 (0.8)	0.50
Vegetables (cups)	0.6 (0.4)	0.5 (0.3)	0.6 (0.4)	0.84
Potatoes, including French fries (cups)	0.2 (0.2)	0.2 (0.2)	0.2 (0.1)	0.60
Whole grains (ounces)	0.5 (0.3)	0.3 (0.3)	0.4 (0.3)	0.11
Saturated fat (grams)	16.1 (7.3)	13.5 (5.7)	15.0 (6.7)	0.23
Meat, poultry, and fish (ounces)	2.4 (1.5)	1.8 (1.4)	2.1 (1.5)	0.24
Dairy (cups)	1.5 (0.8)	1.4 (0.5)	1.5 (0.7)	0.44
Legumes (cups)	0.2 (0.3)	0.1 (0.1)	0.2 (0.2)	0.55
Sugar added to foods/drink (tsp)	4.9 (2.2)	5.8 (5.2)	5.3 (3.7)	0.47
Energy intake (kcal)	1141 (447)	992 (336)	1080 (407)	0.27
Protein (grams)	51 (22)	40 (15)	47 (20)	0.09
Fat (grams)	46 (20)	38 (17)	43 (19)	0.21
Carbohydrate (grams)	134 (49)	127 (42)	131 (46)	0.61
Fiber (grams)	12 (6)	10 (3)	11 (5)	0.41
Sugars occurring in foods, juice (grams)	65 (25)	72 (28)	68 (26)	0.43
Energy from sugary beverages (kcal)	25 (25)	40 (77)	31 (52)	0.38
Sugary beverages (servings)	0.2 (0.2)	0.2 (0.3)	0.2 (0.2)	0.77
<i>CFPQ scales</i>				
Environment (parents make healthy food available in the home)	4.3 (0.6)	4.2 (0.8)	4.2 (0.7)	0.83
Restriction for health (parents control the child's food intake to limit unhealthy foods)	3.5 (1.0)	4.1 (1.0)	3.8 (1.0)	0.06
Parents use food as reward	2.3 (0.9)	2.1 (0.8)	2.2 (0.9)	0.34
Modeling (parents demonstrate healthy eating)	4.2 (1.0)	4.4 (0.9)	4.3 (0.9)	0.60
Encourage balance and variety	4.3 (0.6)	4.6 (0.6)	4.4 (0.6)	0.18
Restriction for weight control (parents control intake to influence weight)	3.1 (0.9)	2.9 (1.0)	3.0 (1.0)	0.63

kcal = kilocalories; SD = standard deviation.

favor having unhealthy foods in the house and purposely took healthy foods out of the house with them on outings in order to have a healthy option available. Second, positive deviants displayed message consistency: they believed that their child knew what foods they could or could not eat for snacks. Third, positive deviants expressed greater

self-efficacy in making changes, for instance, being proactive to overcome their child's picky eating habits in contrast to let it be an ongoing challenge (picky eating was more common in controls). Fourth, positive deviants made incremental changes; for instance, they were more likely to reduce unhealthy snacks rather than trying to

TABLE 3: Representative quotes for each of the five themes identified from the qualitative description analysis alongside representative quotes from controls where appropriate.

Positive deviants	Controls
<p><i>1. Creating healthy food environments</i></p> <p>“... why am I going to have this at the house and her being tempting in eating it. I’d rather not have it and this way whenever she opens the refrigerator well she’s not going to be tempted.” PD13</p> <p>“That’s why I always make sure that they have them in the fridge, because I’d rather them eat as much fruit as they want than have to worry about giving them junk... they’re at the bottom of the fridge drawer. He just opens it.” PD5</p> <p>“When we leave from here, I take a container with fruit for her. Sometimes—she really likes eating celery sticks. I take some celery for her.” PD14</p>	<p>“They can’t just freely go out, open up a bag of chips. They’ll say, ‘Mom, can I open up these Doritos?’ Then, I’ll look to see what I have to make sure... and I’ll be like, ‘All right, well, just get a little bit.’” C1</p> <p>“...but he likes to steal candy. He’ll come in the middle of the night. He’ll go in the refrigerator, take the yogurts. He’ll take the sweet bread we leave out at night on the table.” C12</p> <p>“...he’s really disciplined, he’ll tell me. ‘Mommy, can I grab this?’ ‘Yes.’ And potato chips, we do buy potato chips, but I don’t let them eat an entire bag.” C50</p>
<p><i>2. Message consistency related to snacks</i></p> <p>“She really knows not to eat junk food, which she can’t eat it because we don’t have it. When she goes over to her cousins, she doesn’t eat there. She knows.” PD28</p> <p>“Every Sunday we go out for walks with our bikes and he walks with us, for about two hours.” PD2</p>	<p>“I noticed that the kids eat dinner over there and I cook dinner of here. There’s like a free for all kind of. Yeah, there’s was structure for them but it was like if the girls were hungry you know we’re going to eat this, we’re going to eat that. Just whatever they wanted.” C4</p>
<p><i>3. Confidence in making changes</i></p> <p>“I don’t drink soda anymore either, so me and her... It was just something I wanted to do... it hasn’t been hard at all.” PD23</p> <p>“... Just the food part. We’re still having challenges on that. Hopefully, we can overcome that and just look for ideas. I’m always on Pinterest. I look at ideas of other parents because I’m pretty sure I’m not the only one that has picky eaters.” PD2</p>	<p>“I would I like for her to eat veggies, but she doesn’t... Yeah, she doesn’t like them.” C6</p> <p>“I stay away from certain foods, but I don’t... I guess, I do. I stay away from the foods that I know that my doctor would say no to. As far as portions, I’ve gotten smaller, but that’s about it.” C8</p>
<p><i>4. Making incremental changes</i></p> <p>“Go out with them to play. Also before we hardly went out—and if we do not go out at least we do something for a while in the yard, we do activities, run or play or bicycle or so.” PD15</p> <p>“She would eat like bag of chips too... It’s rare now. It’s maybe once or twice, she’ll eat it during the week.” PD23</p>	<p>“He always wanted the Debbie cakes and ice cream, he was always stuck on peanut butter and jelly and then I changed it.” C5</p>
<p><i>5. Engaging the entire family</i></p> <p>“Well, I mean, I figure we’re all eating the same thing, because if I make changes with one—then one is going to say, ‘Why are you guys eating that and the rest are not?’ So, everyone is the same. We all eat the same thing.” PD12</p> <p>“I already prohibited him from bringing her candy. I told him, ‘You can bring her things that she can eat, but healthy things. Fruit—bring her fruit, any kind of fruit you want to. She loves fruit, apples, grapes.’ I did struggle for a while to get him used to it, but it’s been a long time since he’s brought her that.” PD14</p>	<p>“I’m not drinking no more soda, so she doesn’t drink soda no more... She just drinks when she’s with my mom or sister, like I said, or her dad.” C9</p> <p>“Yeah, because he’ll go and he’ll ask my grandpa, ‘Can I have this?’ My grandpa will give it to him, even though I’ve already told my son no. My grandpa doesn’t know that so it just depends.” C13</p>

eliminate them completely, or were more likely to gradually increase time spent on physical activity rather than abruptly introduce a new rigorous physical activity. Finally, positive deviants successfully engaged the whole family in implementing changes, including engaging the grandparents, and also found opportunities for the whole family to be engaged in a collective physical activity.

What were the notable similarities across groups? Both positive deviants and controls tended to implement rules and limits for the entire family rather than for the individual child. Fathers tended to be more lenient when it came to eating practices in both groups. Controls often described the challenge of other lenient caregivers (fathers and grandparents) feeding their child whatever they wanted, whereas

positive deviants largely described this as a challenge they overcame. There were no differences noted in eating together as a family (commonly described), perceptions of good and bad foods, using food as a reward, dealing with food insecurity, grocery shopping, food preparation, serving size, utilization of nutritional assistance, or eating out. The qualitative descriptions of physical activity were remarkably similar between positive deviants and controls in types of activity, frequency, and degree of parent involvement. No differences in the qualitative data were seen in descriptions of use of community resources, food security, health perceptions, parent modeling, or motivations (family members with diabetes being the most common).

Parents were specifically asked about goals or metrics they set related to their children's health and weight. There were no differences in the description of the goal between the groups. The most common goals were age-appropriate clothing sizes, less bullying at school, decreased weight (total body weight), and specific changes in diet patterns (e.g., less-fried foods). Notably, only positive deviants mentioned using doctor visits to track weight.

4. Discussion

This study is novel in utilizing a large healthcare data set to screen growth charts for potential positive deviants and including a set of controls. Furthermore, an in-depth, mixed-methods approach was employed to compare groups. Five primary qualitative themes distinguished positive deviants from the controls. Self-efficacy was identified as a quantitative predictor of positive deviance, despite the positive deviants having a lower level of educational achievement.

The creation of a healthy food environment emerged as a difference between positive deviants and controls in the qualitative data. Notably, there was no difference in parental self-rating of their creation of a healthy food environment on the CFPQ subscale with an overall mean of 4.2 (SD = 0.7) ($p = 0.83$), perhaps a function of the social desirability bias. Although an association between the home food environment and early childhood obesity has been known [32], only recently have interventions specifically targeted home food environments. An intervention done in a relatively affluent, white population showed a significant reduction in adiposity [33], while an intervention done in a primarily Latino population showed no effect on the home food environment [34]. Family-based interventions that emphasize changes to the home environment have been effective in older age groups [35, 36].

Household-wide rule changes and message consistency were noted in another positive deviance investigation into childhood obesity [17]. In the current study, controls also attempted to implement household-wide rule changes, whereas consistency was in the domain of positive deviants. In the controls, there were multiple examples of parents reporting making household-wide changes to rules and then later describing the different exceptions to those rules. It is notable that the few interventions shown to be effective in this demographic have targeted household routines or emphasized consistency [7, 8].

We identified more restriction related to unhealthy foods but not restriction related to weight status among positive deviants. Restrictive feeding has been hypothesized to contribute to later obesity via the proposed sequelae of overconsumption of restricted, more palatable foods when the restrictions are relaxed [37], although longitudinal data have not confirmed that association [38]. The relationship between restrictive feedings may be in response to weight status [39], and interactions exist between the parenting style, child temperament, and restrictive feeding [40].

Successful engagement of other care providers was unique to positive deviants. Grandparents represented a common care provider, particularly for Latino families [41]. In this study, both grandparents and fathers were described as being more indulgent overall, consistent with prior findings [42]. The key difference in positive deviants was the mother's described ability to effectively change or reign in their indulgent behavior. Although this finding is unique to this study, one of the few other studies using this approach identified a similar construct of social support in positive deviants [43].

Self-efficacy emerged as a predictor of positive deviance in the quantitative data—a finding reinforced in the qualitative descriptions. This finding is consistent with previous studies: interventions designed to facilitate greater self-efficacy (i.e., motivational interviewing) are effective [44, 45]. The qualitative data suggested greater self-efficacy specific to picky eating in positive deviants. Recent longitudinal data on picky eating in early childhood and subsequent weight status have not shown a consistent relationship, although these studies were not done in a Latino population [46, 47]. A recent study in a low-income, mixed race, preschool population found no association between picky eating and obesity but did find an association with healthy eating patterns and picky eating [48]. The picky eating noted among controls in the current study was a significant source of frustration and may also reflect lower general self-efficacy.

The finding of lower education associated with positive deviance status was unexpected. The qualitative data seemed to indicate a pattern of positive deviants listening more to what the doctor told them about their child's weight status compared with controls who more often described the doctor's opinion as incorrect. Lower education has been associated with lower preference for shared decision-making and more paternalistic communication [49], and lower education has been associated with higher vaccine adherence [50]. This finding combined with high general self-efficacy may have contributed to the difference for the positive deviants. Remarkably, the GSES score for positive deviants with less than a high school education was similar to that of the controls with a college education.

We observed a significant association of positive deviance with a slight Mexican orientation on the acculturation scales. Among adults, it has been observed that lower acculturation to the dominant culture in the United States is associated with a healthier lifestyle [51]. However, in contrast to the adult data and our findings, prior studies in children have found an association between obesity and

lower acculturation [52–54]. More recent adult data suggest that the observed association may be related to time in the United States and the community context rather than acculturation per se [55].

We observed a lower reported intake of protein among positive deviants compared with controls. In adult studies of dietary interventions for obesity, the data suggest that higher protein intake correlates with greater weight loss [56, 57]. However, our finding is consistent with cohort studies in early childhood examining macronutrient intake [58–60].

In general, positive deviance studies are well positioned to identify novel strategies to address complex problems by using qualitative methods to elicit previously unidentified themes. One of the notable differences between positive deviance as applied to malnutrition [15] the few studies using the approach in obesity [16, 43, 61] is the proximity in time to intervention.

The vast majority of projects in the field of malnutrition pair up positive deviance with the hearth method of community engagement, teaching the local community about how they can use the findings from their own community in a community health effort. The work on obesity in the United States has been more research-focused. In this context, positive deviance may still provide insight into how to tailor interventions to the population and which components of an intervention are most relevant. Additionally, incorporating findings common across studies such as household-wide implementation of rules may prove to be beneficial.

4.1. Limitations. This study was not powered to detect a difference around the quantitative measures of physical activity, diet, sleep, or other factors. The fact that no major differences emerged in these categories could be either due to a lack of power, potentially social desirability bias in answering the questionnaires driving both responses upwards, or that no differences existed at the time of assessment. Also, parents' reported physical activity and total caloric intake do approximate recommendations in both groups, which may limit the external validity. Using the significance cutoff of $p \leq 0.10$ allowed for identification of possible differences and use of the qualitative data to correlate across data types. However, this increases the possibility of type 1 error. Other limitations include the cross-sectional nature of the collected data and the potential for recall bias as the changes in behaviors or parenting were across time in growth chart trajectories. This study did not investigate data on other siblings' growth trajectories, or the parents' weight changes over the same period. The control group was matched by ethnicity and insurance status; the addition of neighborhood matching could have improved the matching process and controlled for other community-level changes. Although children of 2–5 years were eligible, using the weight trajectory definition of three or more measurements over a one-year period plus the time to conduct the analysis and do recruitment biased the sample toward an older population as seen by the mean age of five years.

5. Conclusion

Using electronic medical records to identify families of children successful in losing their weight identified several behavioral strategies that positively deviant parents employed, for instance, creating healthier food environments, providing consistent messages, effective engagement of caregivers and family members, and a proclivity to encourage incremental changes.

Disclosure

The NIH had no role in the study design, the collection, analysis, and interpretation of data, the writing of the report, or the decision to submit the paper for publication.

Conflicts of Interest

The authors declare that they have no conflicts of interest.

Acknowledgments

This study was funded by the National Institutes of Health to BAF with Grant no. K23DK109199.

References

- [1] Z. J. Ward, M. W. Long, S. C. Resch, C. M. Giles, A. L. Craddock, and S. L. Gortmaker, "Simulation of growth trajectories of childhood obesity into adulthood," *New England Journal of Medicine*, vol. 377, no. 22, pp. 2145–2153, 2017.
- [2] C. L. Ogden, M. D. Carroll, C. D. Fryar, and K. M. Flegal, "Prevalence of obesity among adults and youth: United States, 2011–2014," *NCHS Data Brief*, no. 219, pp. 1–8, 2015.
- [3] G. Flores and L. R. Vega, "Barriers to health care access for Latino children: a review," *Family Medicine*, vol. 30, no. 3, pp. 196–205, 1998.
- [4] S. M. Davis, O. B. Myers, T. H. Cruz et al., "CHILE: outcomes of a group randomized controlled trial of an intervention to prevent obesity in preschool Hispanic and American Indian children," *Preventive Medicine*, vol. 89, pp. 162–168, 2016.
- [5] M. L. Fitzgibbon, M. R. Stolley, L. Schiffer, L. Van Horn, K. Kaufer-Christoffel, and A. Dyer, "Hip-Hop to Health Jr. for Latino preschool children," *Obesity*, vol. 14, no. 9, pp. 1616–1625, 2006.
- [6] N. F. Butte, D. M. Hoelscher, S. E. Barlow et al., "Efficacy of a community-versus primary care-centered program for childhood obesity: TX CORD RCT," *Obesity*, vol. 25, no. 9, pp. 1584–1593, 2017.
- [7] J. Haines, J. McDonald, A. O'Brien et al., "Healthy habits, happy homes: randomized trial to improve household routines for obesity prevention among preschool-aged children," *JAMA Pediatrics*, vol. 167, no. 11, pp. 1072–1079, 2013.
- [8] W. Slusser, F. Frankel, K. Robison, H. Fischer, W. G. Cumberland, and C. Neumann, "Pediatric overweight prevention through a parent training program for 2–4 year old Latino children," *Childhood Obesity*, vol. 8, no. 1, pp. 52–59, 2012.
- [9] A. Singhal, "Communicating what works! Applying the positive deviance approach in health communication," *Health Communication*, vol. 25, no. 6-7, pp. 605–606, 2010.

- [10] A. Singhal, J. Sternin, and L. Dura, "Combating malnutrition in the land of a thousand rice fields: positive deviance grows roots in Vietnam," *Positive Deviance wisdom series*, vol. 1, pp. 1-8, 2009.
- [11] A. Singhal and K. Greiner, "Using the positive deviance approach to reduce MRSA at the Veterans Administration Healthcare System in Pittsburgh," in *Leading Change in Healthcare: Transforming Organizations Using Complexity, Positive Psychology, and Relationship Centered-Care*, A. Suchman, D. Sluyter, and P. Williamson, Eds., pp. 177-209, Radcliffe Publishing, New York, NY, USA, 2011.
- [12] D. R. Marsh, D. G. Schroeder, K. A. Dearden, J. Sternin, and M. Sternin, "The power of positive deviance," *BMJ*, vol. 329, no. 7475, pp. 1177-1179, 2004.
- [13] M. Zeitlin, "Nutritional resilience in a hostile environment: positive deviance in child nutrition," *Nutrition Reviews*, vol. 49, no. 9, pp. 259-268, 1991.
- [14] D. R. Marsh, H. Pachón, D. G. Schroeder et al., "Design of a prospective, randomized evaluation of an integrated nutrition program in rural Vietnam," *Food and Nutrition Bulletin*, vol. 23, no. 4, pp. 36-47, 2002.
- [15] J. Costa Machado, R. Minardi Mitre Cotta, and L. Saraiva da Silva, "The positive deviance approach to change nutrition behavior: a systematic review," *Revista Panamericana de Salud Pública*, vol. 36, no. 2, pp. 134-140, 2014.
- [16] B. A. Foster, J. Farragher, P. Parker, and D. E. Hale, "A positive deviance approach to early childhood obesity: cross-sectional characterization of positive outliers," *Childhood Obesity*, vol. 11, no. 3, pp. 281-288, 2015.
- [17] M. Sharifi, G. Marshall, R. Goldman et al., "Exploring innovative approaches and patient-centered outcomes from positive outliers in childhood obesity," *Academic Pediatrics*, vol. 14, no. 6, pp. 646-655, 2014.
- [18] C. Proust-Lima, V. Philipps, A. Diakite, and B. Lique, *LCMM: Estimation of Latent Class Mixed Models, Joint Latent Class Mixed Models and Mixed Models for Curvilinear Outcomes*, 2013.
- [19] J. W. Tukey, *Exploratory Data Analysis*, Addison-Wesley Pub. Co., Boston, MA, USA, 1977.
- [20] D. Musher-Eizenman and S. Holub, "Comprehensive feeding practices questionnaire: validation of a new measure of parental feeding practices," *Journal of Pediatric Psychology*, vol. 32, no. 8, pp. 960-972, 2007.
- [21] P. A. Harris, R. Taylor, R. Thielke, J. Payne, N. Gonzalez, and J. G. Conde, "Research electronic data capture (REDCap)—a metadata-driven methodology and workflow process for providing translational research informatics support," *Journal of Biomedical Informatics*, vol. 42, no. 2, pp. 377-381, 2009.
- [22] CDC, *Behavioral Risk Factor Surveillance System Questionnaire*, CDC, Atlanta, GA, USA, 2009.
- [23] O. Garcia-Dominic, R. P. Treviño, R. M. Echon et al., "Improving quality of Food Frequency Questionnaire response in low-income Mexican American children," *Health Promotion Practice*, vol. 13, no. 6, pp. 763-771, 2012.
- [24] S. J. Blumberg, N. Halfon, and L. M. Olson, "The National Survey of Early Childhood Health," *Pediatrics*, vol. 113, no. 6, pp. 1899-1906, 2004.
- [25] I. Iglowstein, O. G. Jenni, L. Molinari, and R. H. Largo, "Sleep duration from infancy to adolescence: reference values and generational trends," *Pediatrics*, vol. 111, no. 2, pp. 302-307, 2003.
- [26] T. Remmers, S. M. L. Broeren, C. M. Renders, R. A. Hirasing, A. van Grieken, and H. Raat, "A longitudinal study of children's outside play using family environment and perceived physical environment as predictors," *International Journal of Behavioral Nutrition and Physical Activity*, vol. 11, no. 1, p. 76, 2014.
- [27] USDA, *U.S. Household Food Security Survey Module*, USDA, Washington, DC, USA, 2012.
- [28] R. J. Bosscher and J. H. Smit, "Confirmatory factor analysis of the general self-efficacy scale," *Behaviour Research and Therapy*, vol. 36, no. 3, pp. 339-343, 1998.
- [29] I. Cuellar, B. Arnold, and R. Maldonado, "Acculturation Rating Scale for Mexican Americans-II: a revision of the original ARSMA scale," *Hispanic Journal of Behavioral Sciences*, vol. 17, no. 3, pp. 275-304, 1995.
- [30] S. Sullivan-Bolyai, C. Bova, and D. Harper, "Developing and refining interventions in persons with health disparities: the use of qualitative description," *Nursing Outlook*, vol. 53, no. 3, pp. 127-133, 2005.
- [31] M. A. Neergaard, F. Olesen, R. S. Andersen, and J. Sondergaard, "Qualitative description—the poor cousin of health research?," *BMC Medical Research Methodology*, vol. 9, no. 1, p. 52, 2009.
- [32] S. M. P. L. Gerards and S. P. J. Kremers, "The role of food parenting skills and the home food environment in children's weight gain and obesity," *Current Obesity Reports*, vol. 4, no. 1, pp. 30-36, 2015.
- [33] L. J. Stark, L. M. Clifford, E. K. Towner et al., "A pilot randomized controlled trial of a behavioral family-based intervention with and without home visits to decrease obesity in preschoolers," *Journal of Pediatric Psychology*, vol. 39, no. 9, pp. 1001-1012, 2014.
- [34] R. E. Boles, L. Yun, S. J. Hambidge, and A. Davidson, "Influencing the home food and activity environment of families of preschool children receiving home-based treatment for obesity," *Clinical Pediatrics*, vol. 54, no. 14, pp. 1387-1390, 2015.
- [35] L. H. Epstein, A. Valoski, R. R. Wing, and J. McCurley, "Ten-year outcomes of behavioral family-based treatment for childhood obesity," *Health Psychology*, vol. 13, no. 5, pp. 373-383, 1994.
- [36] B. H. Wrotniak, L. H. Epstein, R. A. Paluch, and J. N. Roemmich, "Parent weight change as a predictor of child weight change in family-based behavioral obesity treatment," *Archives of Pediatrics and Adolescent Medicine*, vol. 158, no. 4, p. 342, 2004.
- [37] L. L. Birch and J. O. Fisher, "Mothers' child-feeding practices influence daughters' eating and weight," *American Journal of Clinical Nutrition*, vol. 71, no. 5, pp. 1054-1061, 2000.
- [38] K. W. Bauer, J. Haines, A. L. Miller et al., "Maternal restrictive feeding and eating in the absence of hunger among toddlers: a cohort study," *International Journal of Behavioral Nutrition and Physical Activity*, vol. 14, no. 1, p. 172, 2017.
- [39] K. E. Rhee, S. M. Coleman, D. P. Appugliese et al., "Maternal feeding practices become more controlling after and not before excessive rates of weight gain," *Obesity*, vol. 17, no. 9, pp. 1724-1729, 2009.
- [40] N. Shloim, L. R. Edelson, N. Martin, and M. M. Hetherington, "Parenting styles, feeding styles, feeding practices, and weight status in 4-12 year-old children: a systematic review of the literature," *Frontiers in Psychology*, vol. 6, p. 1849, 2015.
- [41] E. R. Pulgarón, A. M. Patiño-Fernández, J. Sanchez, A. Carrillo, and A. M. Delamater, "Hispanic children and the obesity epidemic: exploring the role of abuelas," *Families, Systems, and Health*, vol. 31, no. 3, pp. 274-279, 2013.
- [42] N. Z. Mena, K. Gorman, K. Dickin, G. Greene, and A. Tovar, "Contextual and cultural influences on parental feeding

- practices and involvement in child care centers among Hispanic parents,” *Childhood Obesity*, vol. 11, no. 4, pp. 347–354, 2015.
- [43] M. Sharifi, G. Marshall, R. Marshall et al., “Accelerating progress in reducing childhood obesity disparities: exploring best practices of positive outliers,” *Journal of Health Care for the Poor and Underserved*, vol. 24, no. 2, pp. 193–199, 2013.
- [44] M. Borrello, G. Pietrabissa, M. Ceccarini, G. M. Manzoni, and G. Castelnovo, “Motivational interviewing in childhood obesity treatment,” *Frontiers in Psychology*, vol. 6, p. 1732, 2015.
- [45] K. Resnicow, F. McMaster, A. Bocian et al., “Motivational interviewing and dietary counseling for obesity in primary care: an RCT,” *Pediatrics*, vol. 135, no. 4, pp. 649–657, 2015.
- [46] J. F. Rohde, M. N. Händel, M. Stougaard et al., “Relationship between pickiness and subsequent development in body mass index and diet intake in obesity prone normal weight preschool children,” *PLoS One*, vol. 12, no. 3, Article ID e0172772, 2017.
- [47] E. E. Antoniou, A. Roefs, S. P. J. Kremers et al., “Picky eating and child weight status development: a longitudinal study,” *Journal of Human Nutrition and Dietetics*, vol. 29, no. 3, pp. 298–307, 2016.
- [48] C. L. Brown, E. M. Perrin, K. E. Peterson et al., “Association of picky eating with weight status and dietary quality among low-income preschoolers,” *Academic Pediatrics*, vol. 18, no. 3, pp. 334–341, 2017.
- [49] A. Schneider, T. Körner, M. Mehring, M. Wensing, G. Elwyn, and J. Szecsenyi, “Impact of age, health locus of control and psychological co-morbidity on patients’ preferences for shared decision making in general practice,” *Patient Education and Counseling*, vol. 61, no. 2, pp. 292–298, 2006.
- [50] D. A. Salmon, L. H. Moulton, S. B. Omer, M. P. DeHart, S. Stokley, and N. A. Halsey, “Factors associated with refusal of childhood vaccines among parents of school-aged children: a case-control study,” *Archives of Pediatrics and Adolescent Medicine*, vol. 159, no. 5, pp. 470–476, 2005.
- [51] R. Pérez-Escamilla, “Acculturation, nutrition, and health disparities in Latinos,” *American Journal of Clinical Nutrition*, vol. 93, no. 5, pp. 1163–1167, 2011.
- [52] C. Lind, G. G. Mirchandani, B. C. Castrucci, N. Chávez, A. Handler, and D. M. Hoelscher, “The effects of acculturation on healthy lifestyle characteristics among Hispanic fourth-grade children in Texas public schools, 2004–2005,” *Journal of School Health*, vol. 82, no. 4, pp. 166–174, 2012.
- [53] J. P. Moreno, E. Vaughan, D. Hernandez, R. T. Cameron, J. P. Foreyt, and C. A. Johnston, “The impact of acculturation level on weight status and weight outcomes in Hispanic children,” *Journal of Racial and Ethnic Health Disparities*, vol. 3, no. 4, pp. 582–589, 2016.
- [54] M. Fialkowski, R. Ettienne, R. Rivera et al., “Ethnicity and acculturation: do they predict weight status in a longitudinal study among Asian, Hispanic, and non-Hispanic White early adolescent females?,” *Adolescent Health, Medicine and Therapeutics*, vol. 6, p. 1, 2015.
- [55] C. R. Isasi, G. X. Ayala, D. Sotres-Alvarez et al., “Is acculturation related to obesity in Hispanic/Latino adults? Results from the Hispanic Community Health Study/Study of Latinos,” *Journal of Obesity*, vol. 2015, Article ID 186276, 8 pages, 2015.
- [56] T. P. Wycherley, L. J. Moran, P. M. Clifton, M. Noakes, and G. D. Brinkworth, “Effects of energy-restricted high-protein, low-fat compared with standard-protein, low-fat diets: a meta-analysis of randomized controlled trials,” *American Journal of Clinical Nutrition*, vol. 96, no. 6, pp. 1281–1298, 2012.
- [57] O. Ajala, P. English, and J. Pinkney, “Systematic review and meta-analysis of different dietary approaches to the management of type 2 diabetes,” *American Journal of Clinical Nutrition*, vol. 97, no. 3, pp. 505–516, 2013.
- [58] T. Voortman, K. VE. Braun, J. C. Kiefte-de Jong, V. WV. Jaddoe, O. H. Franco, and E. H. van den Hooven, “Protein intake in early childhood and body composition at the age of 6 years: the Generation R Study,” *International Journal of Obesity*, vol. 40, no. 6, pp. 1018–1025, 2016.
- [59] A. Beyerlein, U. M. Uusitalo, S. M. Virtanen et al., “Intake of energy and protein is associated with overweight risk at age 5.5 years: results from the prospective TEDDY study,” *Obesity*, vol. 25, no. 8, pp. 1435–1441, 2017.
- [60] L. Pimpin, S. Jebb, L. Johnson, J. Wardle, and G. L. Ambrosini, “Dietary protein intake is associated with body mass index and weight up to 5 y of age in a prospective cohort of twins1,2,” *American Journal of Clinical Nutrition*, vol. 103, no. 2, pp. 389–397, 2016.
- [61] H. L. Stuckey, J. Boan, J. L. Kraschnewski, M. Miller-Day, E. B. Lehman, and C. N. Sciamanna, “Using positive deviance for determining successful weight-control practices,” *Qualitative Health Research*, vol. 21, no. 4, pp. 563–579, 2011.

Composition Comments

1. Please check whether the affiliations are displayed correctly.
2. Please check the enumeration of all sections and subsections throughout the paper.
3. Should we change “Acculturation Rating Scale for Hispanics” to “Acculturation Rating Scale for Mexican Americans-II” for correctness? Please confirm.
4. The sentence “We examined the ... a positive deviant” is unclear. Please rephrase the sentence for clarity.
5. The sentence “Given that education ... high school education)” is unclear. Please rephrase the sentence for clarity.
6. We have changed “Figure 2” to “Table 3” both in figures and citations. Please check.
7. The sentence “One of the ... time to intervention” is unclear. Please rephrase the sentence for clarity.
8. Please provide volume number for the reference [2].

Author(s) Name(s)

It is very important to confirm the author(s) last and first names in order to be displayed correctly on our website as well as in the indexing databases:

Author 1

Given Names: Byron A.
Last Name: Foster

Author 4

Given Names: Barbara J.
Last Name: Turner

Author 2

Given Names: Christian A.
Last Name: Aquino

Author 5

Given Names: Arvind
Last Name: Singhal

Author 3

Given Names: Sharol
Last Name: Mejia

It is also very important for each author to provide an ORCID (Open Researcher and Contributor ID). ORCID aims to solve the name ambiguity problem in scholarly communications by creating a registry of persistent unique identifiers for individual researchers.

To register an ORCID, please go to the Account Update page (<http://mts.hindawi.com/update/>) in our Manuscript Tracking System and after you have logged in click on the ORCID link at the top of the page. This link will take you to the ORCID website where you will be able to create an account for yourself. Once you have done so, your new ORCID will be saved in our Manuscript Tracking System automatically.